

Welcome to LDS

SERVING CHILDREN WITH LEARNING
DIFFERENCES SINCE 1970



TABLE OF CONTENTS



03 WELCOME

Welcome to our community. Learn more about the core values that guide us.

10 BURSARY SUPPORT

Find out more information on third party grants and qualification criteria.

05 THE RISE METHOD

Get to know the RISE methodology that our instruction programs follow.

12 OTHER PROGRAMS

Our team is always looking for new ways to support out students and our community; check out some of the new programs we are offering.

06 OUR ONE-TO-ONE PROGRAMS

Our one-to-one instruction helps students succeed academically, and assists in building their skills and confidence in and outside of school.

13 RISE ASSISTIVE TECHNOLOGY

LDS is carefully researching and adopting leading edge assistive technologies to provide the best support for our students.

09 PROGRAM FEES

We operate on a sliding scale fee model to ensure our services are accessible to all families.

15 ALL PROGRAMS OVERVIEW

Full overview of program and service offerings.



WELCOME TO THE LDS COMMUNITY

A LETTER FROM OUR EXECUTIVE DIRECTOR

We are truly excited and honoured to welcome (or welcome back!) you and your family to the LDS community.

Whether you are joining us in East Vancouver, North Vancouver, through a RISE at School program, or virtually via RISE at Home, please know that you are now part of a community of educators, advocates and other guardians, parents and students who want to help your child and your family succeed. Please lean on us and let us know how we can help you best support your child.

At LDS, each member of our team is driven by and committed to our mission: to empower *all* children and youth with learning differences to recognize their unique strengths and develop the tools to achieve lifelong confidence and success. We believe that our approach to empowering your child is special because we work behind the scenes to deliver *individualized* services to each student based on their needs, and as a charity, we do that for every student we work with, regardless of the family's ability to pay.

We take pride in grounding our work with each student and family according to the following service provision principles:

1. **Holistic:** We coordinate with parents and guardians, general classroom teachers, resource teachers, counsellors, psychologists, family doctors, pediatricians and other professionals to build a full picture of each student's learning profile
2. **Individualized:** We develop customized learning plans and practice careful instructor matching and case management for each unique student.
3. **Accessible and Inclusive:** We work to design our spaces and deliver our programming so that students and families find them inclusive and physically as well as financially accessible.
4. **Technology enhanced:** We integrate assistive technologies into programs and make software and hardware available to empower students and enhance student learning and progress.
5. **Integrated:** We strive to complement and enhance students' experiences at school and to empower children and families toward self-advocacy.

In order to fulfill our mission and our service principles, we work every day to enhance, improve and add to the resources we provide to families. We thank you for your patience and your feedback as we evolve! Please check in with us (via our site, social media, newsletter, or directly) to learn about our comprehensive programs, services and resources.

I welcome your ideas, questions and comments any time. Please reach out directly at ED@ldsociety.ca or 604.345.9129.

Yours in community,

Rachel S. Forbes
Executive Director

WHAT OUR FAMILIES HAVE TO SAY

“

***THE INSTRUCTOR
ASSIGNED TO US BY LDS IS
AMAZING AT GETTING MY
DAUGHTER ENGAGED &
EXCITED TO LEARN. SHE
HAS GROWN BY LEAPS
AND BOUNDS AND IS
GETTING BETTER AT
READING ALL THE TIME.
THANK YOU, I COULD NOT
DO THIS ALONE!***

”

THE RISE METHOD

OUR SPECIALIZED INSTRUCTION PROGRAMS FOLLOW OUR UNIQUE RESEARCH-INFORMED INDIVIDUALIZED STUDENT EDUCATION (RISE) METHODOLOGY. OUR EMPHASIS IS ON PROVIDING CUSTOMIZED PROGRAMMING THAT IS DESIGNED SPECIFICALLY TO MEET THE NEEDS OF YOUR CHILD.

WHAT MAKES RISE SPECIAL?

Developed from BC's Core Competencies, research-based practices, and our intake process, the RISE Method offers an individualized approach to suit the learning strengths and stretches of each of our students.

During the intake process, our staff learn about your child's strengths and needs. While we review existing documentation, including school reports and psychoeducational assessments. Once a student is placed with a specialized instructor, we also conduct informal assessments to help identify gaps in your child's learning and areas for growth. For our summer intensive programming, we conduct formal assessments.

Our curricula are research-based to support our diverse students. We strive to find the right curriculum, or a combination of curricula, to support each of our students.

Our instructors include BC Certified Teachers, Special Education Assistants, Orton-Gillingham Certified Instructors, and experienced inclusive educators. Passionate for making education accessible for everyone, our instructors meet students at their individual level and work on building each student's confidence, foundational skills, and to reignite students' love of learning.

With the guidance of our Learning Support Team, Instructors individualize their lesson plans to target the gaps in students' learning and build on their foundational skills. Instructors help students identify strategies to make learning a success in and out of the classroom.

We work hard to match students with appropriate instructors and ensure there is a good relationship built and maintained between an instructor and student. Like our diverse students, our instructors come to us with varying backgrounds as well.

Our curricula

RISE is an individualized program – we know that each unique student has a unique way of learning. Therefore, we draw from a variety of curricula to develop a customized plan for our direct explicit and individualized instruction. Our curricula options include:

- Read Naturally
- Self-Regulated Strategy Development (SRSD)
- Orton-Gillingham
- JUMP Math
- Funemics
- IXL Math
- Reading A-Z
- Pink Cat Educational Games
- Words Their Way



RISE ONE-TO-ONE INSTRUCTION

Our one-to-one learning programs follow our unique Research-informed Individualized Student Education methodology. Our emphasis is on providing customized programming that is designed specifically to meet the needs of your child.

Homework Support

Student receives instruction in foundational skills (literacy and math) with an emphasis on homework support and/or reinforcement of concepts taught in the classroom.

Explicit Instruction

In collaboration with the Learning Support Team, the instructor plans and implements structured lessons to target specific learning objectives. Student progress is assessed on an ongoing basis and detailed reports are shared with the family bi-annually.

Summer RISE Intensive

Summer RISE Intensive helps prevent the 'summer slide' by providing students with intensive, individualized support to build foundational academic skills in literacy and math during summer.



OUR ONE-TO-ONE PROGRAMS

WHAT'S INCLUDED IN OUR ONE-TO-ONE PROGRAMS

HOMEWORK SUPPORT

Most suitable for students who receive homework regularly (grade 8 - 12), Instructors support students with their homework in literacy and numeracy based subjects.

- Intake meeting to assess scheduling, funding, and other needs
- Review of any relevant educational documents (IEP, PsychEd, report cards) to determine learning needs
- One-to-one instruction in the areas of literacy and numeracy homework, by experienced, specially trained instructors.
- Instructors may draw from our curricula options for support.
- Instructor can support with test preparation, note-taking, and study skills.
- TutorCruncher summary reports after each session
- Learning Support Team observation and coaching of instructors
- Most suitable for upper elementary and high school students (grades 8 to 12)

EXPLICIT INSTRUCTION

Aims to bridge gaps in specific subject areas to help students reach grade-level expectations. Most students attend two hours per week. Instructors will not work on homework. Family receives detailed assessments, progress monitoring, and reporting.

- Intake meeting to assess scheduling, funding and other needs.
- Informal assessment, review of any relevant educational documents (IEP, PsychEd, report cards) to determine learning needs.
- Guidance from Case Manager to develop learning and instruction plans, including a range of hours of instruction that may be warranted
- Explicit one-to-one instruction in foundational skills (phonics, reading comprehension, math foundations, writing foundations).
- Instructors will draw from our curricula options
- Case management by LDS's Learning Support Team, including BC Certified Teacher(s), as well as observation and coaching of instructors
- TutorCruncher summary reports after each session
- Mid term and end of term detailed reports
- Suitable for students in grades 1 through 12 who are struggling in school and are lacking in foundational skills
- No homework is to be done during sessions unless approved by case manager

SUMMER RISE INTENSIVE

- Runs over the summer, with students attending in either July or August
- Students receive 37.5 hours of one-to-one Explicit Instruction (in either Math, Literacy, or both) over a 3 week period
- Review of any relevant educational documents (IEP, PsychEd, report cards) to determine learning needs
- Students complete a formal assessment as part of their placements (KTEA-3)
- Intake meeting to assess scheduling, funding and other needs.
- Parents/ Guardians receive a detailed summary report of progress at the end of the program.
- Most suitable for students (grades 3- 12)
- Morning or afternoon

WHAT OUR STUDENTS HAVE TO SAY

“

IN GRADE 5 I WAS STRUGGLING WITH MATH REALLY BADLY. THANKFULLY, I ENDED UP WITH [AN LDS INSTRUCTOR], WHO HELPED ME OUT WITH ALL OF MY HOMEWORK AND MATH PROBLEMS. THE ATMOSPHERE AT LDS TO ME WAS ALWAYS INVITING, AND THE STAFF WELCOMED THE STUDENTS. NOW, I DON'T HAVE THAT MUCH OF A HARD TIME WITH MATH ANYMORE, AND I'M GLAD THAT I GOT HELP.

”

PROGRAM FEES

FOR ALL RISE INSTRUCTION:

- There is an onboarding and intake fee of \$150.00 for new families and \$100.00 fee for returning families, which helps cover a small fraction of the time we spend getting to know you and your child and developing an individualized service for them. This fee must be paid at the start of sessions. It can be dispersed over three months if needed. Bursaries and third party funders cannot cover the onboarding and intake fee.
- Onboarding and intake meetings may include (at the discretion of staff): intake meeting, informal assessment of child's learning needs (where warranted), review of educational documents (IEP, Psych-Ed, report cards, other information), customized matching of child with instructor(s) based on learning needs and scheduling requirements, scheduling of sessions, support with funding applications if needed, creation of a TutorCruncher account, hard copy and e-book welcome package with all LDS materials and information.

Other programs (e.g. SLP, PEERS, Early RISERs) have specific fees; please see our website or contact us.

1:1 Instruction at LDS

Explicit Instruction, Homework Support, RISE at Home, RISE Now, RISE TEAM, Summer Tutoring

Bursary level informed by government documentation (most recent notice of assesment)

Net household income	Payment source/ conditions	Session rate for families
\$65,000 and under	CKNW Kids' Fund, Variety Heart Fund, in house bursary, and family pay	\$15/hr
\$65,000 to \$85,000	Variety Heat Fund, in house bursary, and family pay	\$50/hr
\$85,000 to \$95,000	In house bursary (or other specific bursaries)	\$70/hr
\$95,000 and over	Full pay	\$85/hr

BURSARY SUPPORT

NAVIGATING FUNDING OPTIONS

As a nonprofit charity, LDS is dedicated to providing equitable, affordable access to learning support for all students. Thanks to the ongoing generous support of our donors, grantors and sponsors, we are able to connect qualifying families with external bursaries as well as provide an internal bursary fund to help subsidize the cost of our programming to families in need.

During our intake process, our Program Team helps identify families who may be eligible for internal or external bursaries. Families must be able to demonstrate financial need through tax documents (i.e. the previous year's household Notice of Assessment). Qualifications vary depending on the funding organization.

Through internal and external bursaries we are able to reduce the rate that the family is required to pay. Bursaries may vary depending on the program. Please consult the appropriate program page for additional information regarding funding.

Please note that none of these funding sources are *guaranteed* even where a family technically meets the criteria.

BURSARY OPTIONS

CKNW Kids' Fund

- Eligible families must have a *gross* household income of \$75,000 or less based on previous year's Notice of Assessment(s)
- Funds up to \$1800 every six months for tutoring
- Funds up to \$2500 every six months for speech and language services
- Please see our "CKNW Kids' Fund Application Guide" for assistance and important information as well as the application form's instruction pages
- <https://www.cknwkidsfund.com/apply-for-a-grant>

Variety Children's Charity Heart Fund

- Eligible families must have a net household income of \$85,000 or less
- Funds up to \$1500 every year for tutoring
- Variety's funds are extremely limited and are allocated on a first come first serve basis
- <https://www.variety.bc.ca/grants/individual-grants/>

Autism Funding Unit (AFU)

- Eligible families must have a child with an Autism Spectrum Disorder diagnosis
- Funds up to \$6000 for services that support skills development, including communication, social-emotional, academic and life skills
- To set up AFU coverage for LDS programs, please complete a Request to Pay (RTP) Service Providers/ Suppliers Form. The fastest way to submit is through My Family Services.
- Please speak with an LDS Program Team member for additional information

Jordan's Principle

- Eligible families must have a status or non-status Indigenous child who lives on or off reserve
- Requires a completed request form, brief summary of the request, official quote from the service provider, and supporting documents such as: a letter from a health/social professional involved in the children's lives that directly recommends the requested support
- Applications can be emailed, mailed, or made over the phone through Jordan's Principle's call centre that's open 24 hours a day, 7 days a week
- <https://www.sac-isc.gc.ca/eng/1568396042341/1568396159824>

WHAT OUR FAMILIES HAVE TO SAY

“

**THANK YOU SO MUCH! I AM
EMOTIONAL RIGHT NOW
BECAUSE I HAVE NEVER SEEN
MY DAUGHTER THIS WAY,
HOW HAPPY SHE IS AT LDS.
SHE ALWAYS MENTION[S]
HOW GRATEFUL SHE IS GOING
TO LDS. SHE ALWAYS HAS A
STORY TO TELL AS SOON AS I
PICK HER UP FROM LDS. I
CAN'T THANK YOU ENOUGH.
ONE DAY, I WILL BE ABLE TO
GIVE BACK TO THE
ORGANIZATION.**

”

OTHER SERVICES

LDS IS ALWAYS SEEKING WAYS TO IMPROVE OUR SERVICES FOR STUDENTS WITH LEARNING DIFFERENCES AND THEIR FAMILIES. HERE ARE SOME FEATURED UPCOMING PROGRAMS. PLEASE SEE MORE UNDER 'PROGRAMS' ON OUR WEBSITE.

FAMILY COACHING

LDS Family Coaching pairs guardians and parents with our trained coaches to provide guidance, strategies, tools, and mentorship to help you best support the learning needs of your child. Coaching can address your family's unique needs as you strive toward a calm and connected home life while navigating your child's learning needs – including online learning needs during the pandemic. Our goal is to support you as you develop the knowledge, tools, and techniques to set your child up for success.

SPEECH AND LANGUAGE PATHOLOGY (SLP)

LDS is now offering speech therapy for students who have difficulties with speech, language, communication, literacy and cognitive skills. Our Speech Language Pathologists will work with you and your child to establish person-centered goals. Using evidence-based methods, they will create a speech therapy program for your child, ensuring that sessions are fun, motivating and goal-oriented.

SOCIAL SKILLS GROUP



LDS is excited to announce that we are now certified to offer PEERS® the only evidence-based teen social skills program in the world. Developed by Dr. Elizabeth Laugeson at the University of California—Los Angeles (UCLA), the Program for the Education and Enrichment of Relational Skills (PEERS®) is world-renowned for providing evidence-based social skills programming to preschoolers, adolescents and young adults with autism spectrum disorder (ASD), attention-deficit/hyperactivity disorder (ADHD), anxiety, depression, and socio-emotional issues.

RISE ASSISTIVE TECHNOLOGY



AT LDS WE ARE USING ASSISTIVE TECHNOLOGY TO ENHANCE BEST PRACTICE IN OUR TEACHING AND STUDENT LEARNING AND TO FURTHER THE ACCESSIBILITY AND INCLUSIVENESS OF OUR SUPPORT. WE ARE CAREFULLY IDENTIFYING AND ASSESSING POTENTIAL ASSISTIVE TECHNOLOGIES FOR SPECIFIC USE IN INDIVIDUAL STUDENT'S LEARNING PLANS TO MAXIMIZE THE BENEFIT TO EACH STUDENT.

RISE-AT STUDIO

Our RISE-AT Studio showcases a variety of leading-edge hardware and software assistive technology tools that can assist, support and enhance learning for individuals with learning differences. Our RISE-AT Studio is available for use by our LDS community to explore technology options that may be helpful to their learning progress.

The goal of our RISE-AT Studio is to inspire a collaborative community of technology users and developers to advance assistive technology innovation and adoption to support the advancement of accessible and inclusive education for those with special education needs.

RISE-AT SOFTWARE SUITE

LDS has carefully selected a suite of assistive software products to offer to our staff, students, and families. These tools are offered free of charge thanks to our generous assistive technology sponsors.

To claim your free copy of any of our assistive software tools, please contact AT@ldsociety.ca. You can also register for an LDS assistive software virtual tour to get an in-depth introduction to our assistive software suite.



WHAT'S IN OUR RISE-AT SOFTWARE SUITE...

MINDMEISTER



Mind mapping allows you to bring your ideas, notes, todo, and plans together in one smooth and intuitive graphic. MindMeister makes it easy to organize in style with colour, emojis, pictures and videos, and even includes tools for real-time collaboration and creating presentations.

READ&WRITE



Read&write is a toolbar that offers tools to let everyone read, write, and express themselves more confidently and independently. From hearing emails or documents read out loud to text prediction, picture dictionaries, summary highlighters and a grammar, spelling and confusable words checker, Read&Write makes lots of everyday literacy tasks simpler, quicker and more accurate.

GRAMMARLY



From grammar and spelling to style and tone, Grammarly helps you eliminate writing errors and find the perfect words to express yourself. You'll get real-time feedback from Grammarly on Gmail, Google Docs, Twitter, LinkedIn, and nearly everywhere else you find yourself writing. Grammarly is a writing assistant that offers you specific suggestions to help you improve your writing — and it goes way beyond grammar. You can be confident that your writing is not only correct, but clear and concise, too. Be sure to register your account to receive a personalized writing report each week to help you track your progress and identify improvement areas.

BEE LINE READER



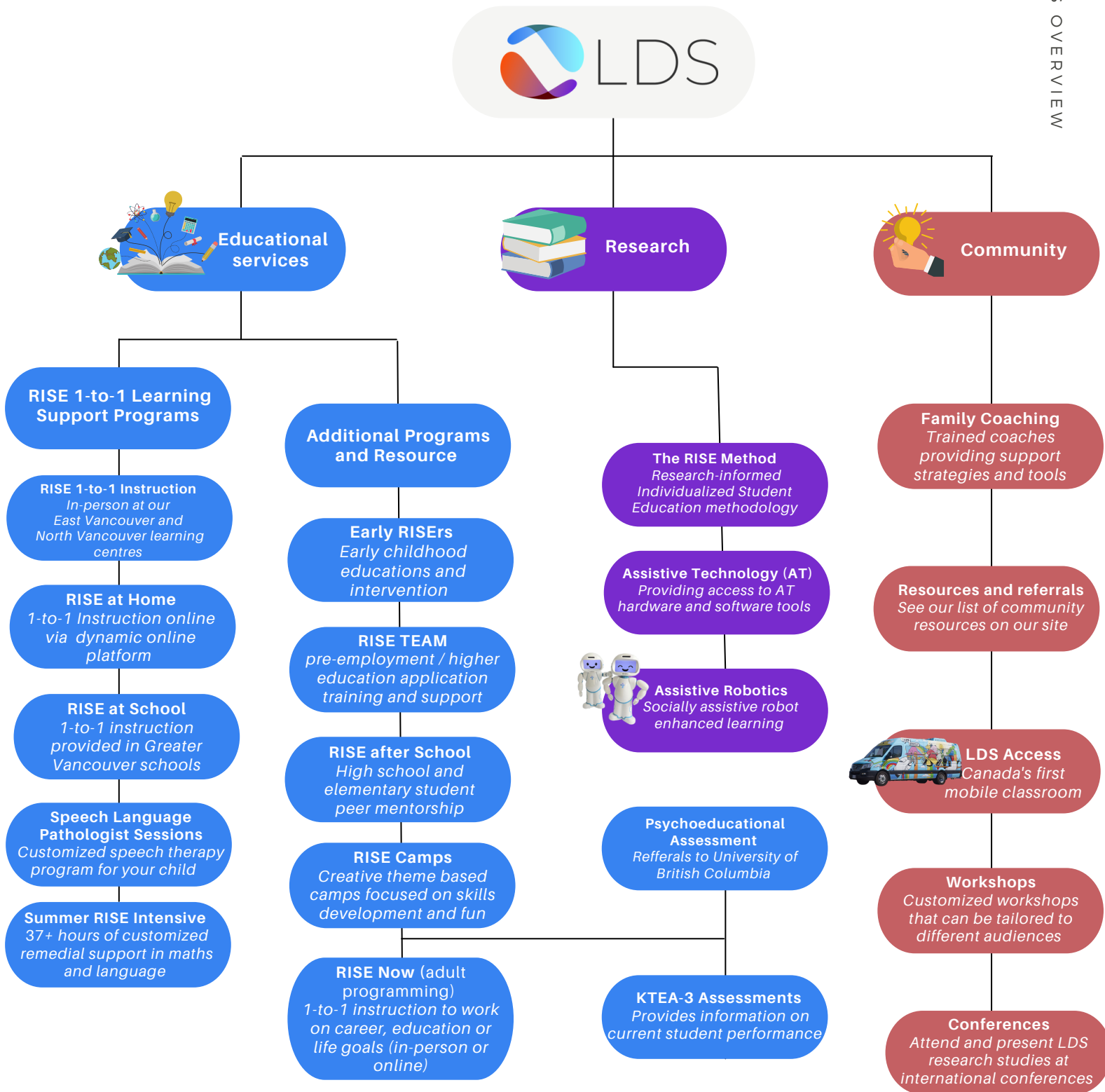
Suffering from screen fatigue? BeeLine Reader is here to help! BeeLine Reader is a browser extension that makes reading on-screen easier, faster, and more enjoyable. BeeLine uses a simple cognitive trick — an eye-guiding color gradient — to pull your eyes through long blocks of text. This helps you read more effectively and maintain your focus better.

LIVE IT EARTH



LIVE IT EARTH is the leading Canadian company offering kids, schools and families, mind-blowing online learning about the natural world that takes them from sea to space. Live It uniquely creates 'live' programs for home and school classrooms that inspire kids to care for the world around them and empower them to act on that care. Live It brings leading experts and indigenous perspectives together to create high-quality and story-rich online learning experiences.

ALL PROGRAMS OVERVIEW



WHAT OUR FAMILIES HAVE TO SAY

“

***OUR INSTRUCTOR TEACHES
MY DAUGHTER VERY WELL
AND IT MADE HER WANT TO
CONTINUE TUTORING ONLINE.
SHE'S VERY KIND AND
PATIENT. SHE MAKES IT A
FUN PROCESS! THANKS SO
MUCH LDS!***

”